

Tech Talks Schedule – Presentation will begin shortly



Tuesday, May 3

Developing with Matter on the MG24

Tuesday, May 17

AI/ML: Bringing Intelligence to the Edge on the MG24

Tuesday, May 31

Matter: Securing your IoT devices

Tuesday, June 14

Wi-Fi: Coexistence with RS9116

We will begin in:

0:00

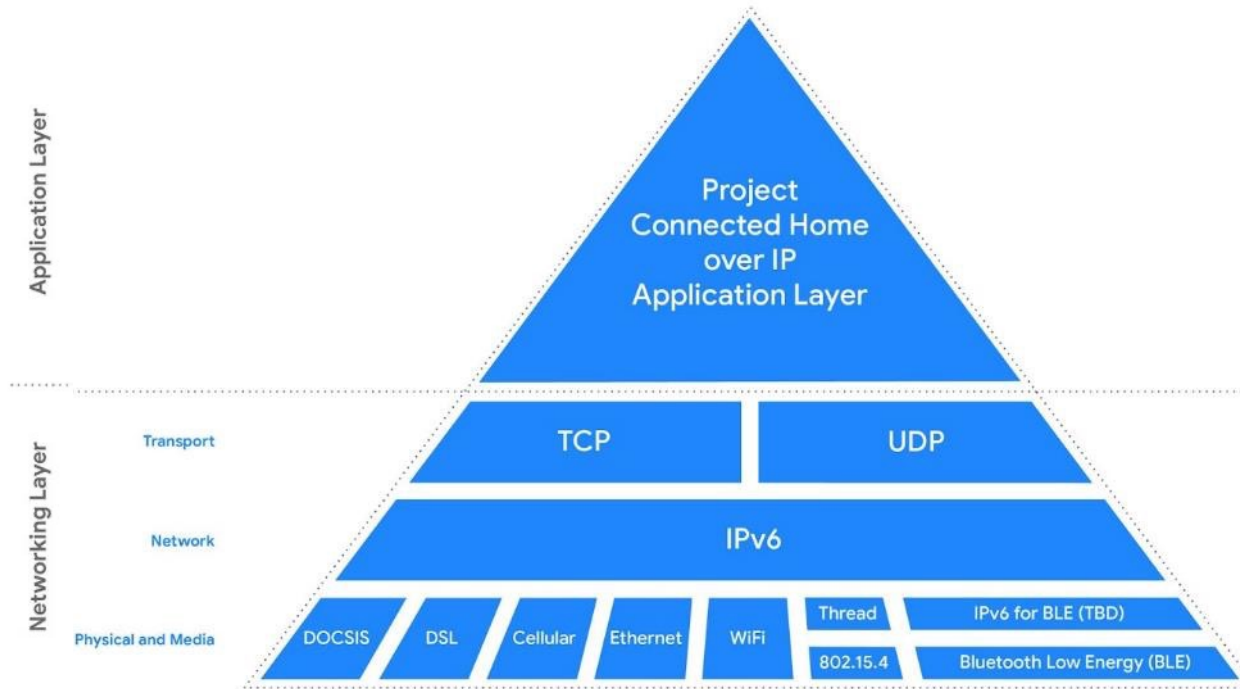


Welcome

Developing with Matter on the MG24

Paul Benford

New to Matter?



 **zigbee** Zigbee Cluster Library  Apple HomeKit
 **WEAVE** Google Weave  Amazon Alexa's Smart Home

 <https://github.com/project-chip/connectedhomeip>

Consumers

- **Smooth user experience**
 - ▶ Control devices with an app or smart speaker of any vendor
- **Buy devices with confidence**
 - ▶ It will work in any ecosystem

Device Makers

- **Join the worlds biggest ecosystems**
 - ▶ Increase revenue with one SKU
- **Reduce R&D costs & Time to market**
 - ▶ One SDK, codebase and maintenance scheme

Ecosystem providers

- **Better user-experience**
 - ▶ Grow user base, increase revenue



How Matter Stacks Up



Lighting, Electrical



Blinds/Shades



HVAC Controls



TVs



Access Control



Safety & Security



Access Points,
Bridges



Controllers (in a variety
of devices and interfaces)

Common application layer + data model

Interoperability, simplified setup & control

IP-based

Convergence layer across all compatible networks

Secure

AES-128-CCM encryption with 128-bit AES-CBC

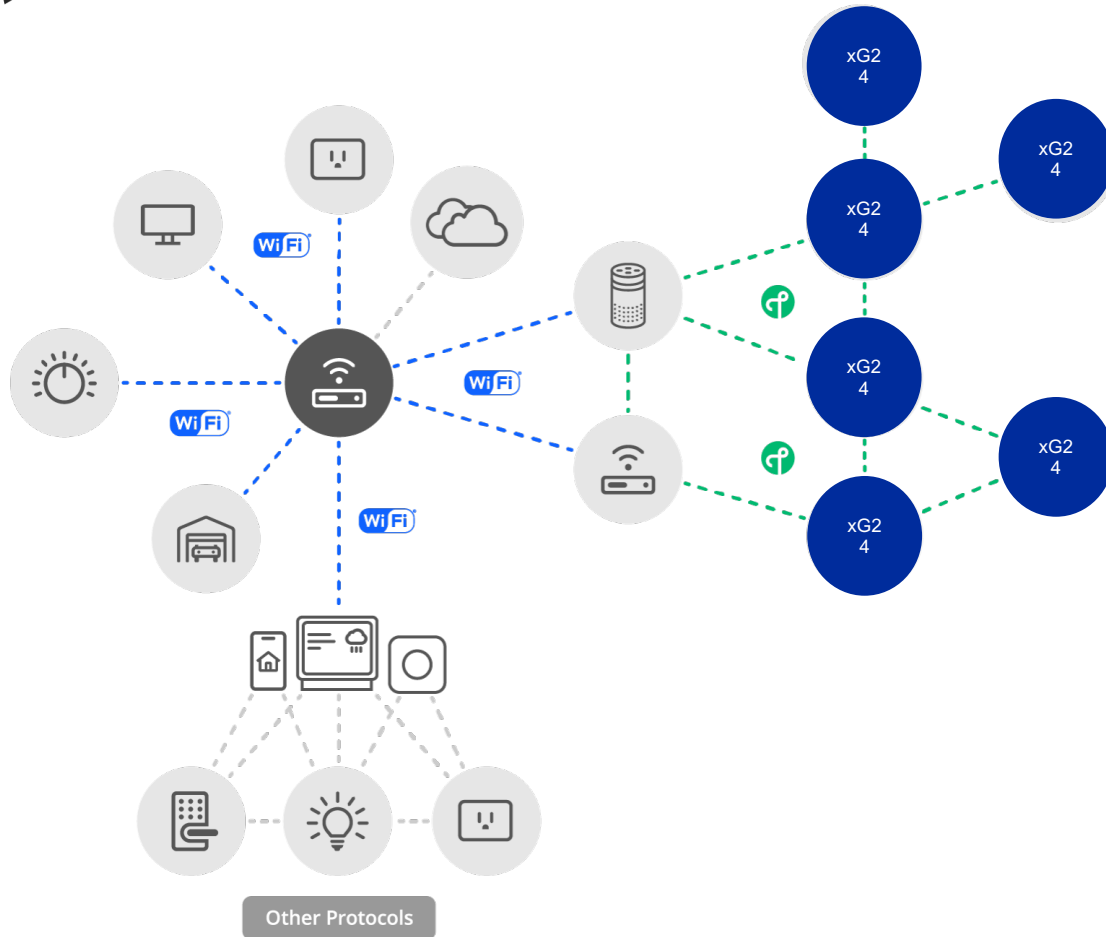
Open-source development approach

Based on market-proven technologies

Common protocol across device and mobile

Extendible to cloud

Matter Network Topology



- **Devices are commissioned onto a Matter network via Bluetooth**
- **Matter devices connect to the network over Wi-Fi or Thread**
- **Thread devices connect to other IP networks through Border Routers**
- **Bridges can link to other protocols like Zigbee and Z-Wave**

Introducing the EFR32xG24



- 2.4GHz wireless SoC with Matter, Zigbee, OpenThread, Bluetooth and Multiprotocol
- AI/ML hardware accelerator to allow 2x to 4x faster inferencing at the edge
- Secure Vault™ protects data and device; PSA Certification Level 3
- 20-bit ADC for advanced sensing
- High performance RF for robust and reliable communication
- 1.5 MB Flash and 256 kB RAM for Matter and other future requirements
- Low active current for longer battery life

Industry's Only Wireless SoC with Matter, AI/ML, Higher Memory and Higher Security for IoT Edge Devices

MG24: Optimized for Battery Powered IoT Mesh Devices

▪ Target Markets

- Smart Home
- Gateways / Hubs
- Building Automation
- Lighting
- Portable Medical Devices
- AI/ML



▪ High Performance Radio

- Up to +19.5 dBm TX
- -97.6 dBm RX @ BLE 1 Mbps
- -105.7 dBm RX @ BLE 125 kbps
- **-105.4 dBm RX @ 15.4**
- Wi-Fi Coexistence
- RX Antenna Diversity

▪ ARM® Cortex®-M33

- 78 MHz (FPU and DSP)
- TrustZone®
- **Up to 1536kB of Flash**
- **Up to 256kB of RAM**

▪ Low Power

- 5.0 mA TX @ 0 dBm
- 19.1 mA TX @ +10 dBm
- 4.4 mA RX (BLE 1 Mbps)
- **5.1 mA RX (250 kbps 802.15.4)**
- 33.4 µA/MHz
- 1.3 µA EM2 with 16 kB RAM

▪ Dedicated Security Core

- **Secure Vault™ - Mid / High**

▪ AI/ML

- AI/ML Hardware Accelerator

▪ Low-power Peripherals

- EUSART, USART, I2C
- 20-bit ADC, 12-bit VDAC, ACMP
- Temperature sensor +/- 1.5°C
- 32kHz, 500ppm PLFRCO

▪ World Class Software

- **Matter**
- **Thread**
- Zigbee
- **Bluetooth (1M/2M/LR)**
- Bluetooth mesh
- Dynamic multiprotocol¹
- Proprietary

▪ SoCs and Modules

- 5x5 QFN40 (26 GPIO) +125°C
- 6x6 QFN48 (28/32 GPIO) +125°C
- 12.9x15.0 PCB Module (Q3 2022)
- 7x7 SiP Module (Q4 2022)

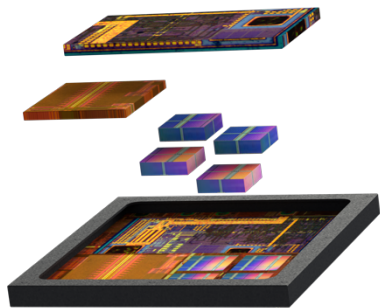
¹Requires MG24

Silicon Labs Matter Solution

THREAD

Bluetooth®

WiFi®



HARDWARE

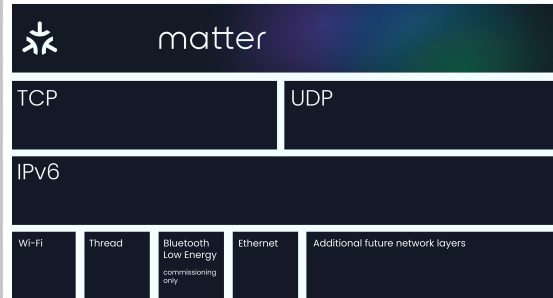
Field Proven SoCs & Modules

Thread, Bluetooth & Wi-Fi

Certified Thread PHYs



matter



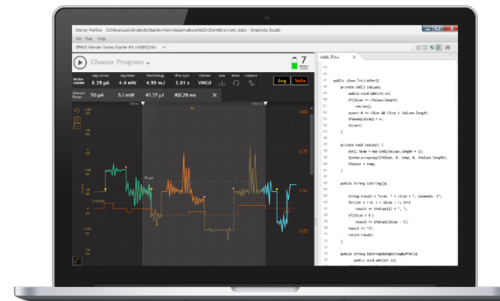
SOFTWARE

One-stop-shop for all software

Full featured Matter solution

Built on top of IP stacks

14
Simplicity
Silicon
Studio 5



TOOLS

Reference Applications

Command Line Interface support

LCD to display QR code



CERTIFICATION

+50,000 Wi-Fi & 802.15.4 end products deployed

Support for end-product certification

Matter certification at mid of 2022

Getting Started with EFR32MG24 SoCs

▪ Dev Board

- ▶ Low-cost development board
- ▶ On-board debugger
- ▶ Signal breakouts
- ▶ On-board sensors
- ▶ 20-bit ADC
- ▶ AI/ML hardware accelerator

▪ Contents

- ▶ 1x dev board



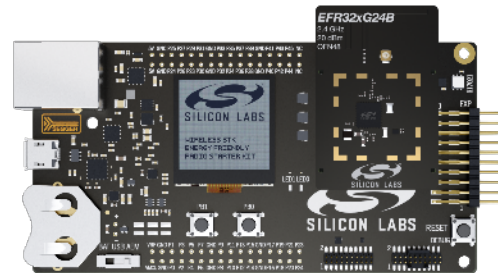
Part Number	Description
xG24-DK2601B	EFR32xG24 2.4 GHz +10 dev board

▪ Pro kits

- ▶ Modular development platform
- ▶ Advanced development
- ▶ RF measurements
- ▶ Energy profiling
- ▶ External device debug
- ▶ Ethernet for large network test

▪ Contents

- ▶ 1 x WSTK main board
- ▶ 1 x radio board



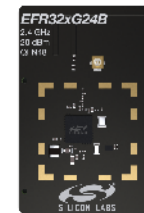
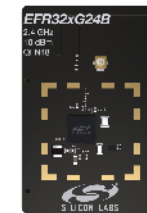
Part Number	Description
xG24-PK6009A	EFR32xG24 2.4 GHz +10 dBm Pro Kit
xG24-PK6010A	EFR32xG24 2.4 GHz +20 dBm Pro Kit

▪ Radio Board kits

- ▶ Uses existing WSTK boards
- ▶ Uses existing software tools

▪ Contents

- ▶ 1x radio board



Part Number	Description
xG24-RB4186C	EFR32xG24 2.4 GHz +10 dBm Radio Board
xG24-RB4187C	EFR32xG24 2.4 GHz +20 dBm Radio Board
xG24-RB4188A	EFR32xG24 +20 dBm Antenna Diversity Board

Demo setup

Matter

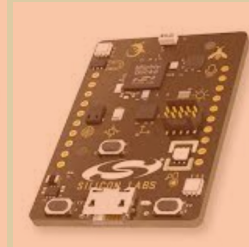


Wi-Fi

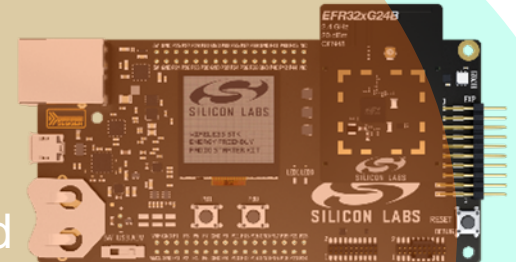
**Raspberry Pi 4 running
host applications from
connectedhomeip
repository**



**Raspberry Pi 4 configured
as an Open Thread
Border router using the
TBS2 as the RCP Open
Thread radio**



Thread



**Wireless Starter kit with
radio board BRD4186C
EFR32xG24 10dBm**



 SILICON LABS | tech 

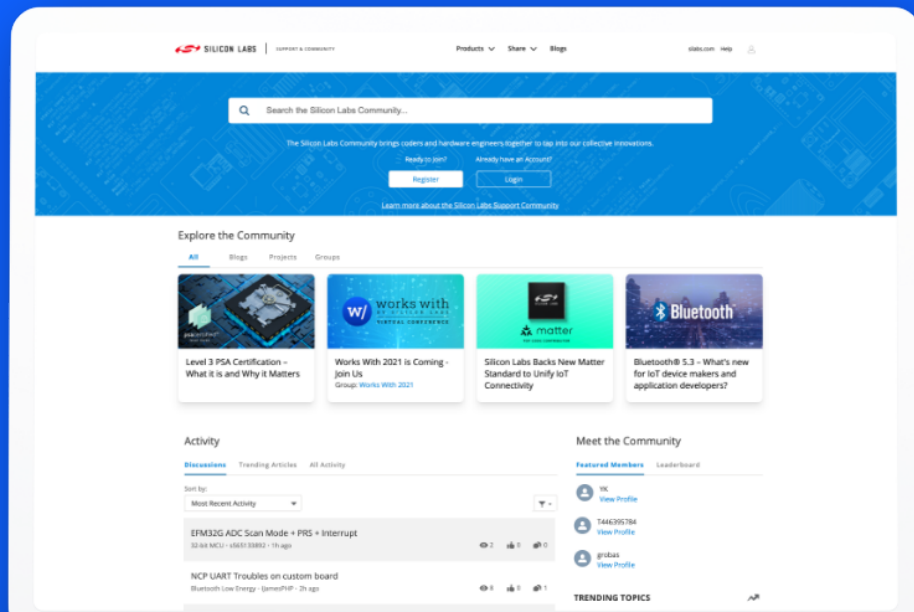
Thank You



 SILICON LABS | tech 

Q&A

Continue Discussion in Our Community!



How to Navigate:

- “Products” to troubleshooting forums
- “Applications” to discuss IoT
- “Share” to view example projects and existing groups
- “Blogs” to view and discuss thoughts from our specialists

community.silabs.com

tech **talks**

WEBINAR

AI/ML: Bringing Intelligence to the Edge on the MG24

MAY 17 | 10AM CDT



New Hands-on Workshop



- (1) Free MG24 development kit
- 4-Part workshop series consisting of:
 - Hands-on Lab & Technical Training
 - 1:1 Troubleshooting Support
 - Live Q&A
- Register Today at silabs.com/mg24-techlab

Topic	Date – 10AM CST / 10:00 CET
Unboxing the MG24 and AI/ML Foundations	May 19, 2022
Accelerate AI/ML at the Edge with xG24 and SensiML	May 26, 2022
Accelerate AI/ML at the Edge with xG24 and Edge Impulse	June 2, 2022
How to Use Peripherals and Sensors to Gather and Report Data	June 9, 2022